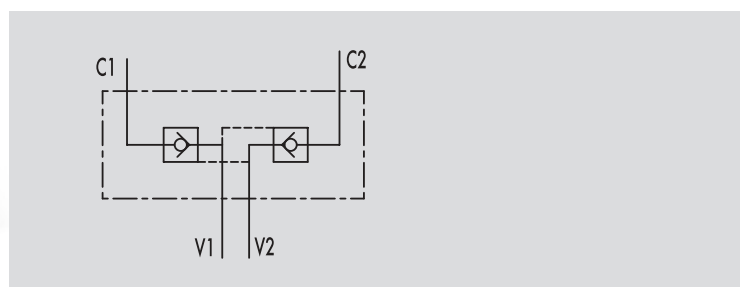
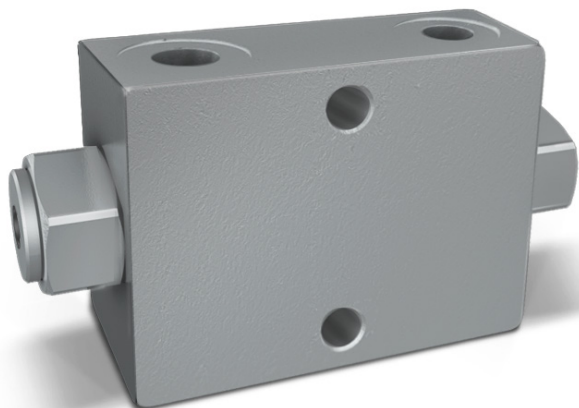


## VALVOLE DI BLOCCO PILOTATE A DOPPIO EFFETTO TIPO A

TIPO / TYPE  
**VBPDE A**SCHEMA IDRAULICO  
HYDRAULIC DIAGRAMDOUBLE PILOT OPERATED  
CHECK VALVES - TYPE A**IMPIEGO:**

Valvola utilizzata per bloccare in posizione un cilindro in entrambi i sensi, consentendo il flusso in una direzione ed impedendolo in senso contrario fino a quando non viene applicata la pressione di pilotaggio.

**MATERIALI E CARATTERISTICHE:**

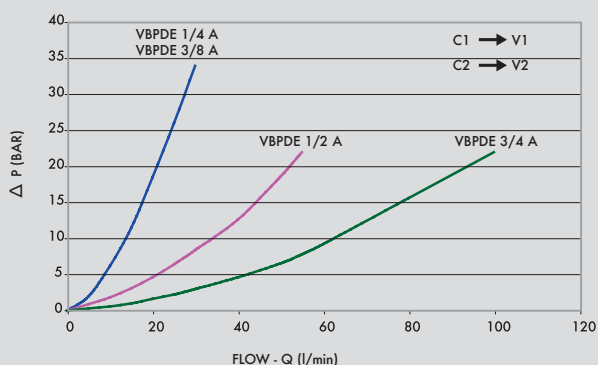
Corpo: acciaio zincato  
Componenti interni: acciaio temprato termicamente e rettificato  
Guarnizioni: BUNA N standard  
Tenuta: a cono guidato. Non ammette trafilementi

**MONTAGGIO:**

Collegare V1 e V2 all'alimentazione e C1 e C2 all'attuatore.

**A RICHIESTA**

- senza guarnizione OR sul pilota
- Molla 1 Bar
- Molla 8 Bar

**PERDITE DI CARICO**  
PRESSURE DROPS CURVE**USE AND OPERATION:**

Pilot check valves are used to block the cylinder in both directions. Flow is free in one direction and blocked in the reverse direction until pilot pressure is applied.

**MATERIALS AND FEATURES:**

Body: zinc-plated steel  
Internal parts: hardened and ground steel  
Seals: BUNA N standard  
Poppet type: any leakage

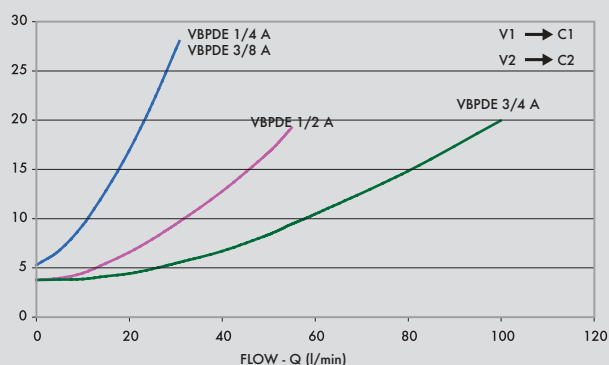
**APPLICATIONS:**

Connect V1 and V2 to the pressure flow and C1 and C2 to the actuator.

**ON REQUEST**

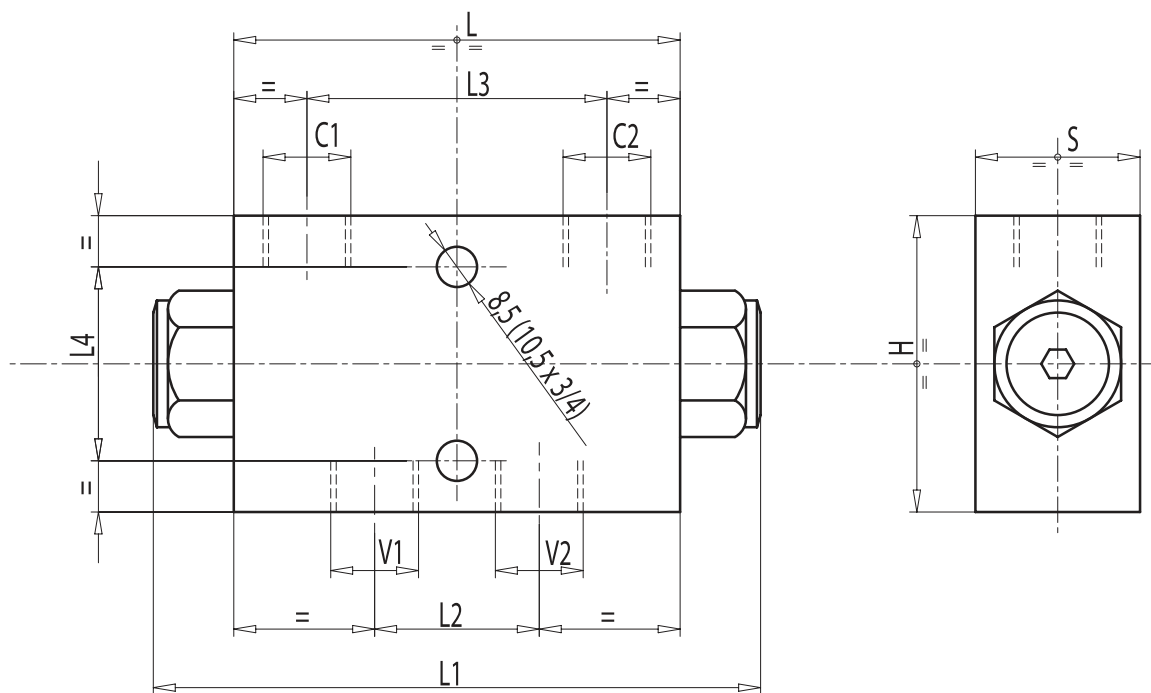
- without seal on pilot piston
- 1 Bar spring
- 8 Bar spring

Temperatura olio: 50°C - Viscosità olio: 30 cSt  
Oil temperature: 50° C - Oil viscosity: 30 cSt





CODICE CODE	SIGLA TYPE	RAPP. PILOT PILOT RATIO	PORTATA MAX MAX FLOW Lt. / min	PRESSIONE MAX MAX PRESSURE Bar	PRESSIONE APERTURA CRACKING PRESSURE Bar
<b>V0178</b>	VBPDE 1/4" A	1:5,5	20	350	4,5
<b>V0180</b>	VBPDE 3/8" A	1:5,5	30	350	4,5
<b>V0190</b>	VBPDE 1/2" A	1:4,5	55	350	5,5
<b>V0191</b>	VBPDE 3/4" A	1:3,7	100	350	3



CODICE CODE	SIGLA TYPE	V1 - V2 C1 - C2 GAS	L mm	L1 mm	L2 mm	L3 mm	L4 mm	H mm	S mm	PESO WEIGHT kg
<b>V0178</b>	VBPDE 1/4" A	G 1/4"	80	113	27	52	44	60	30	1,032
<b>V0180</b>	VBPDE 3/8" A	G 3/8"	80	113	30	52	44	60	30	0,994
<b>V0190</b>	VBPDE 1/2" A	G 1/2"	115	147	39	80	40	80	35	2,324
<b>V0191</b>	VBPDE 3/4" A	G 3/4"	158	198	50	105	58	80	50	4,800