

Our solutions...

NEM can offer a broad range of products, from pressure control valves to flow control valves to coils and electro - hydraulics actuators.



Cartridges

Main relief valves . Overcenter valves
Directional control valves
Flow control valves . Logic elements



Electric cartridges

Main relief valves . Directional control valves
Flow control valves . Standard Bodies



Parts in body valves

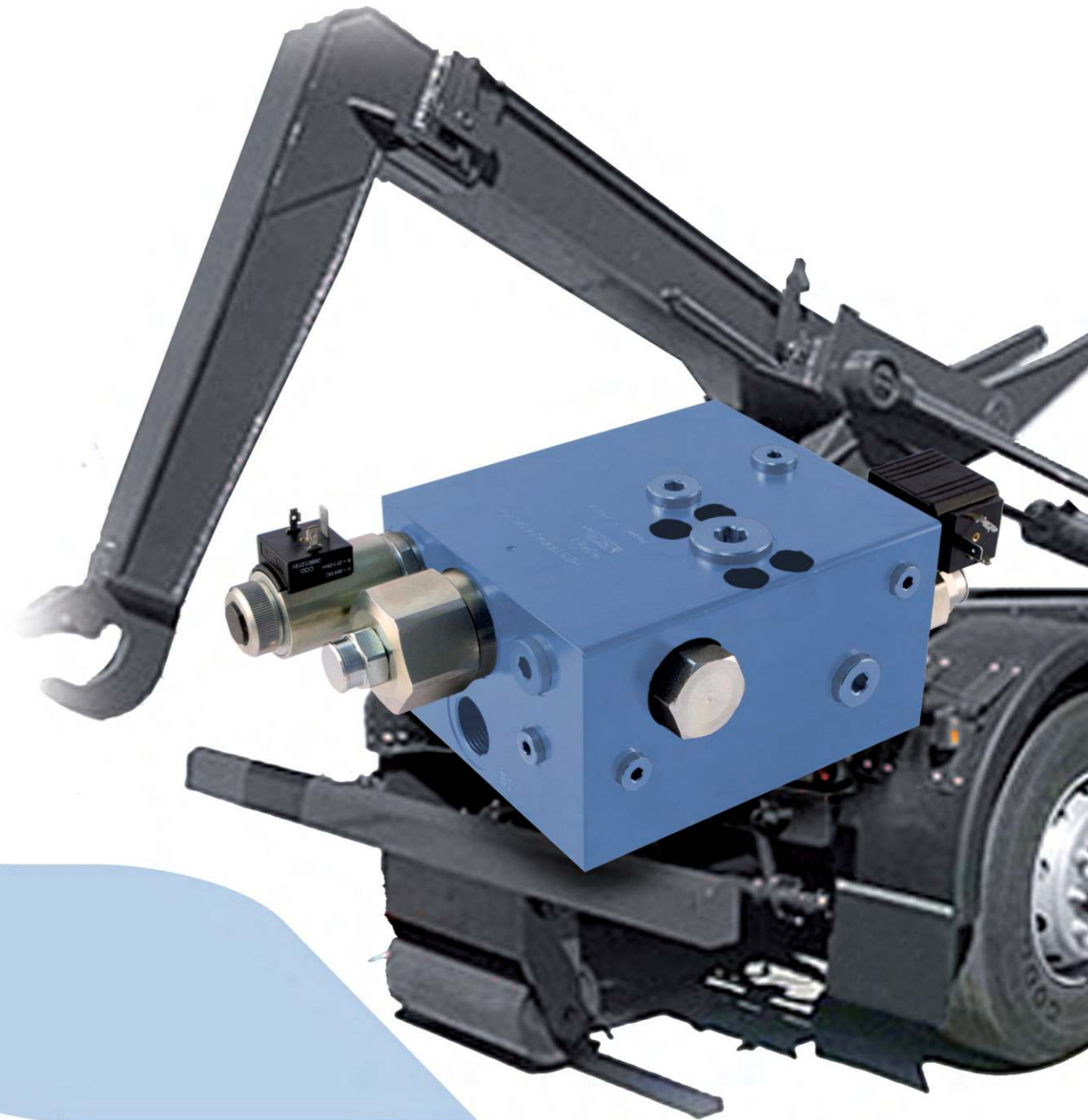
Main relief valves . Overcenter valves
Valves for excavators . Flow control valves
Direct acted and Pilot operated



Applications

Weight lifting . Earth moving
Agricultural and industrial vehicles

Our solutions... FOR HOOK LOADERS



NEM
NEM-HYDRAULICS.COM

NEM
NEM-HYDRAULICS.COM

42020 QUATTRO CASTELLA . LOC. MONTECAVOLO (RE) ITALY . VIA S.ALLENDE, 21/A
TEL. +39 (0)522.880619 . FAX +39 (0)522.880512 . INFO@NEM-HYDRAULICS.COM . WWW.NEM-HYDRAULICS.COM

THE PRESENT PUBLICATION IS INTENDED FOR MARKETING COMMUNICATIONS. NEM S.P.A. RESERVES THE EXCLUSIVE RIGHT TO MAKE ANY CHANGE TO THE PRODUCTS, WHICH, WITHOUT ALTERING THEIR ESSENTIAL FEATURES, APPEAR TO BE NECESSARY OR SUITABLE.

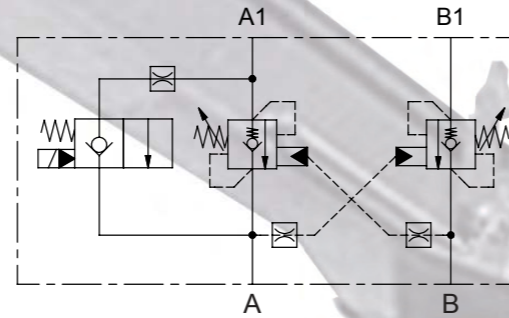
HOOK LOADER VALVES WITH BASIC CIRCUITS

A complete range of basic components allow us to design tailor-made products to meet customers specification and layout. **Double acting overcenter valves** with or without low speed approach features are part of **NEM's** Hook loader valves range.

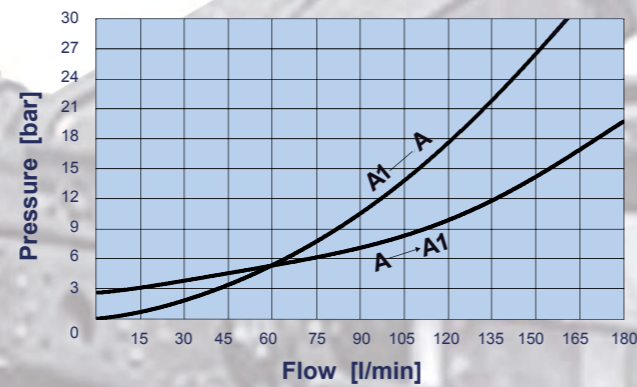
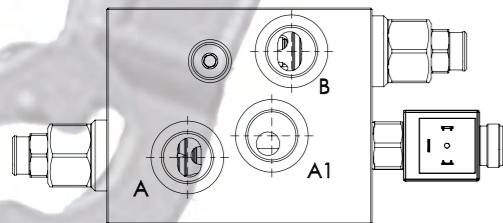
NEM's Hook loader valves have been designed keeping in mind the importance of "low pressure drop equal to efficiency". The use of market proven components combined with FEM structural analysis ensure long life to the valve blocks.

Main features:

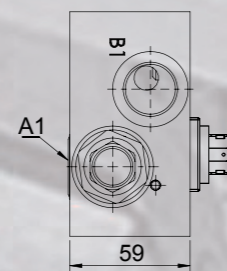
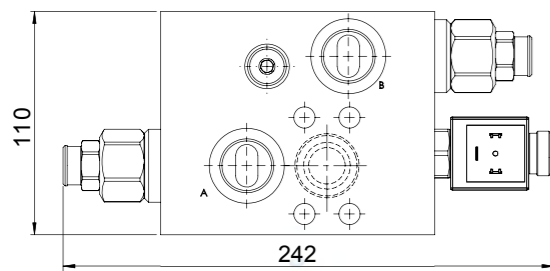
- Pump flow: 150 lpm
- Low-speed approach
- Flanged version: 3/4"SAE-3000 psi
- In-line version: BSP 3/4"
- Coils 14 and 26 VDC
- Connectors: DIN, AMP, DEUTSCH



In-line mounted version



Flange mounted version

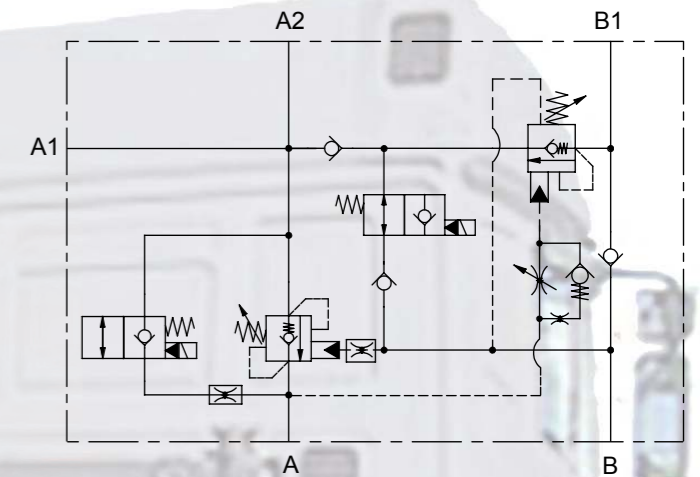


HOOK LOADER VALVES WITH REGENERATIVE CIRCUITS

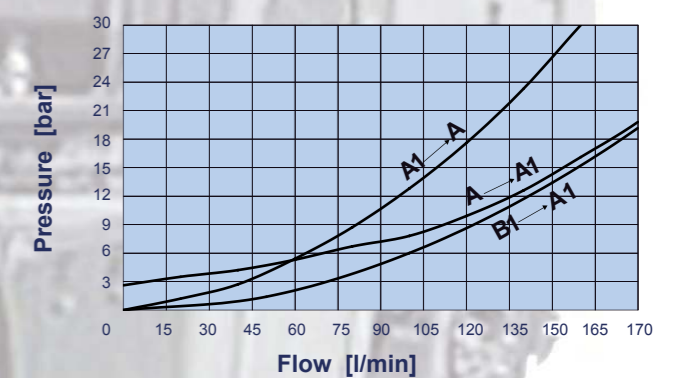
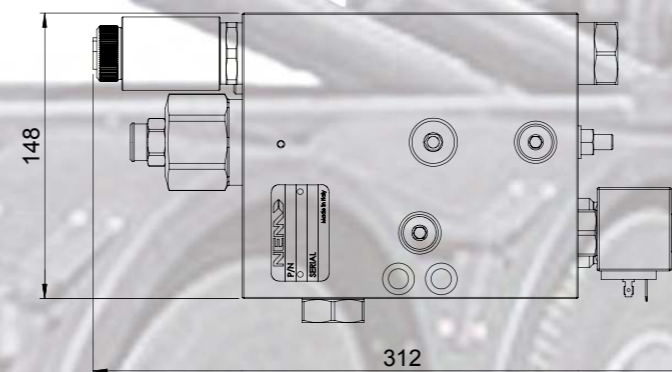
When working cycles are critical the cylinder extension speed can be improved by valves equipped with regenerative circuits. The **NEM's** hook loader valves with **Regenerative circuits** includes Low-speed approach, features and Regenerative circuit cut-off, to improve boom force, when handling loaded containers. Also with Regenerative circuits valves block low pressure drop was our main target.

Main features:

- Pump flow: 150 lpm
- Regenerative flow: 250 lpm
- Regenerative cut-off function
- Low-speed approach
- Flanged version: 3/4"SAE-3000 psi
- In-line version: BSP 3/4"
- Coils 14 and 26 VDC
- Connectors: DIN, AMP, DEUTSCH



In-line mounted version



Flange mounted version

