

## Our solutions...

NEM can offer a broad range of products, from pressure control valves to flow control valves to coils and electro - hydraulics actuators.



### Cartridges

Main relief valves . Overcenter valves  
Directional control valves  
Flow control valves . Logic elements



### Electric cartridges

Main relief valves . Directional control valves  
Flow control valves . Standard Bodies



### Parts in body valves

Main relief valves . Overcenter valves  
Valves for excavators . Flow control valves  
Direct acted and Pilot operated



### Applications

Weight lifting . Earth moving  
Agricultural and industrial vehicle

## Our solutions... FOR MOBILE CRANES



**NEM**  
NEM-HYDRAULICS.COM

**NEM**  
NEM-HYDRAULICS.COM

42020 QUATTRO CASTELLA . LOC. MONTECAVOLO (RE) ITALY . VIA S.ALLENDE, 21/A  
TEL. +39 (0)522.880619 . FAX +39 (0)522.880512 . INFO@NEM-HYDRAULICS.COM . WWW.NEM-HYDRAULICS.COM

## EN-13000 (2010) NEW REQUIREMENTS

2010 will introduce important changes to EN 13000, one includes the introduction of the **Rated Capacity Limiter (RCL) override key**.

This device will allow the crane driver to operate the crane in case of RCL failures and recover suspended loads at a limited speed of movement.

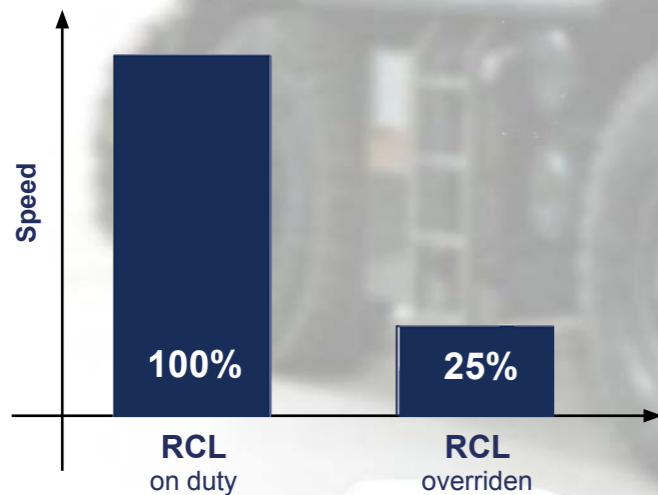
All the emergency operations with RCL override key activated, will be recorded by a data logger for 30min. The use of the RCL override key must be prevented during normal working operations. **To comply this specific requirement, on hydraulic operated systems, the EN-13000 specify that the speed of movements must be limited to 25% max.**

**In order to obtain reduced speed on all movements (Boom lowering included), NEM engineered specific products to be implemented in the hydraulic system.**

The range of NEM's products available to comply the EN-13000 revision are: Flow Control valves, Pilot Pressure control blocks and Solenoid cartridge valves.

Customized solutions and manifolds are available, our complete range of valves allows the development of dedicated product to customer specifications.

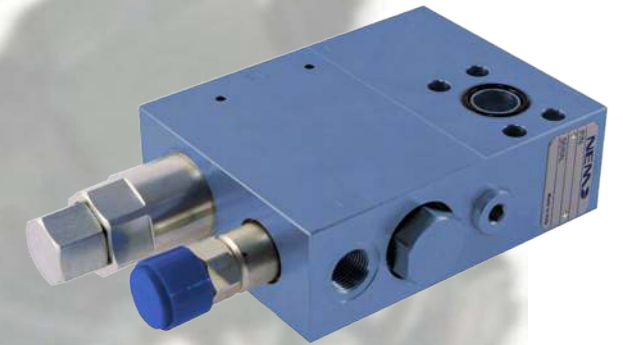
**OEM's Mobile Crane** manufacture can count on NEM's know how and quality in order to find the answer to their expectation.



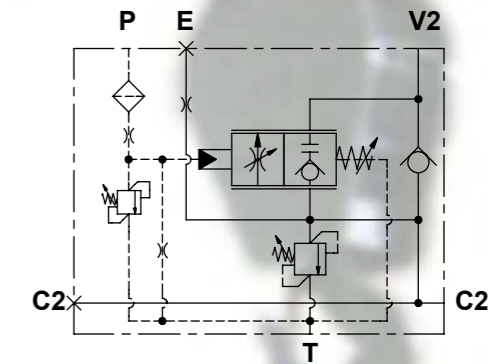
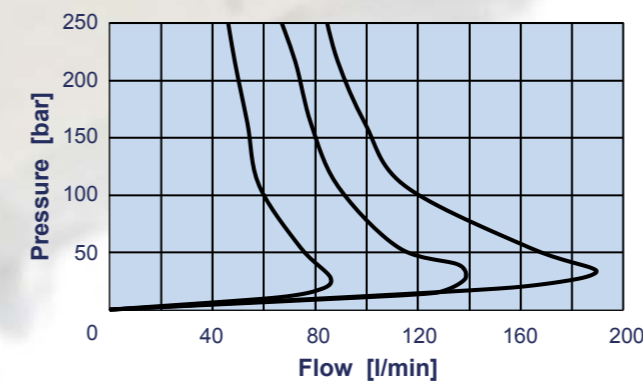
## BOOM: Load lowering control valves

Main features:

- LHD20Y LHD30Y series
- Poppet style design
- Load sensitive lowering speed
- Flow range: 100 – 200 – 300 l/min
- Flanged port sizes: 3/4" and 1" SAE-6000 psi
- Maximum lowering speed adjustment
- Joystick and Direct pilot actuation



The NEM's load lowering control valves for mobile cranes application are specifically designed for Rough and All terrain cranes, they combines a simple and reliable design with an **effective lowering speed reduction Vs load increasing**.



## WINCH: Overcenter valves with brake release

Main features:

- LHD25X series
- Poppet style design
- Flow range: 350 l/min
- Flanged port sizes: 3/4" and 1" SAE-6000 psi
- Damped pilot pressure
- Pilot ratio: 13:1



The NEM's overcenter valves for mobile cranes winch application are specifically designed to be flanged on hydraulic motors for Rough and All terrain cranes, they are equipped with shuttle valve for brake releasing during lifting and lowering operations. Moreover, they are assembled with a restrictor on the pilot section to dump oscillations during lowering controls on Load Sensing systems and improving the valve smoothness.

